



FEEL THE RIDE. LIVE THE LEGEND.

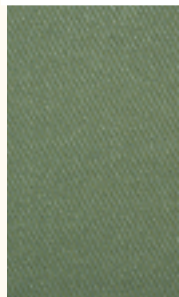
Overall Length (w/bow pulpit):	48' 3" (14.71m)
Hull Length (Standard ISO 8666):	45' 4" (13.82m)
Beam, Max:	14' 11" (4.54m)
Draft:	4' 4" (1.32m)
Height Above Waterline, Max:	13' 5" (4.09m)
Cockpit Square Feet:	140 sq.ft (13.05m <sup>2</sup> )
Displacement (lbs.):	46,305 lbs. (21.0 ton)
Fuel Capacity (US Gal.):	618 (2,340 lt.)
Fresh Water Capacity (US Gal.):	159 (600 lt.)
Holding Tank Capacity (US Gal.):	37 (140 lt.)
Standard Engine:	Twin MAN V-8 CR, 900 HP
Styling & Internal Design:	Zuccon International Project
Interior Decor:	Marty A. Lowe, Inc.



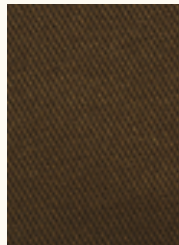
## Chubb Cay



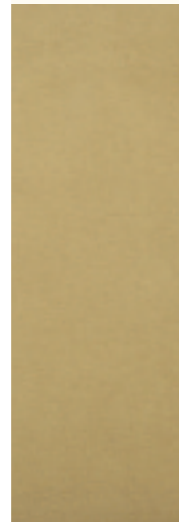
Barrel Chair



Owners Bedding



Port Twin Bedding



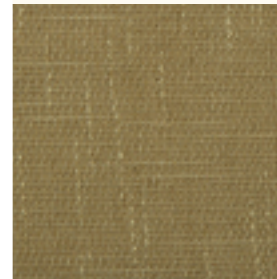
Dinette



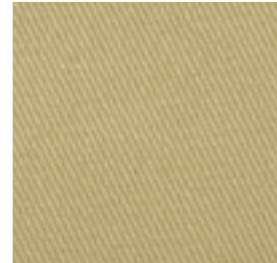
Throws



Carpet



Sofa Fabric



Twin Bedding



Wall Covering For Head



Throw Pillows



Throw Pillows



Throw Pillows

## 2009 Decór

Organic green accents draw attention to rich brown hues, creating Chubb Cay, an interior collection as inspirational and inviting as Bertram yachts themselves.

The 2009 Bertram 450 interior was created by renowned interior yacht design company, Marty Lowe, Inc.

# 450



FEEL THE RIDE. LIVE THE LEGEND.

a Ferretti brand

BERTRAM YACHT, INC.

3663 N.W. 21st Street, Miami, Florida 33142

Phone (305) 633-8011 Fax (305) 635-1388

[www.bertram.com](http://www.bertram.com)

Bertram Yacht, Inc. reserves the right to make changes at any time, without notice, in design, materials, colors, equipment, models and prices, and to discontinue models. Photographs are shown for illustrative purposes only, and may show items that are optional equipment, special decor or custom items.

©2008 Bertram Yacht, Inc. All Rights Reserved.

## Fusion of Form and Function



FEEL THE RIDE. LIVE THE LEGEND.



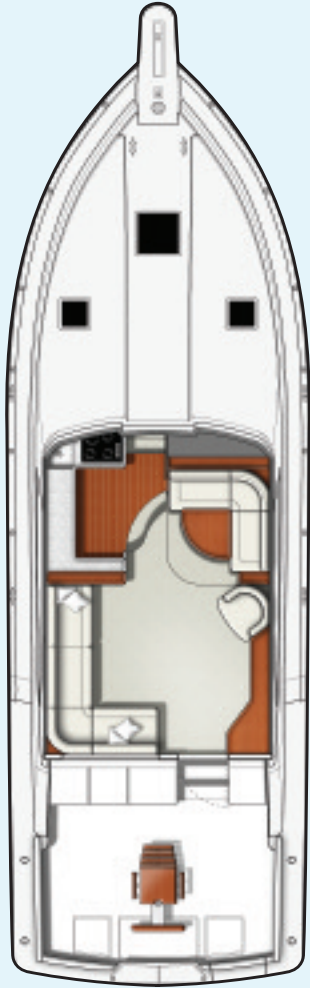


## Specifications

### Bridge



### Salon



### Staterooms



Some optional equipment may be displayed in floor plans.  
Please refer to your local dealer for standards and options.

#### Exterior Finish

- Maxguard ( PREMIUM ISO-NPG gelcoat )
- Feature stripes painted with Dupont IMRON® paint
- BOMAR hatches powder coated to match gelcoat
- Molded non-skid gelcoat deck surfaces
- Blister resistant vinyl ester resin in hull bottom skin coat

#### Hull, Deck and Flybridge Construction

- Hand laid composite structural bulkheads & web members
- Deck: hand laid molded fiberglass hull and sandwich construction to hull
- Flybridge: hand laid-up molded fiberglass and sandwich construction to deck
- Hull: hand laid-up molded fiberglass, solid bottom with cored hullsides, solid keel and chines
- Solid fiberglass hull bottom. Hull sides & superstructure laminated with high density foam.

#### Hull

- Ball seacocks on all underwater thruhull fittings, all with electrical bonding
- Bertram dark blue waterline stripe
- Bottom paint with primer coat and 1 coat dark blue anti-fouling paint
- Freshwater tank: injection molded
- Fuel Tank: FRP, zero trim effect (midship mounted) with fuel level sightglass
- Holding tank: with liquid level monitors and plumbed for dockside pump out
- Linear exhaust muffler system
- Recessed transom swim/emergency steps
- Recessed trim tabs, Electro-hydraulic
- Sump tank with automatic pump-out for shower and sink
- Zincs, transom mounted

#### Deck

- Anchor locker
- Anchor: Delta 35 lbs. with chain and line
- Anchor windlass: electric with deck mounted foot controls
- Cleats: 2 forward, 2 aft with transom havse pipes, 4 springline
- Compressed heavy-duty white vinyl rubrail with solid stainless steel insert
- Fuel fills, port & starboard
- Fuel fill alarm
- Freshwater tank fill
- Bertram dark blue deck stripe with gold accent pin-stripe

- Hatches over engines for ease of engine access
- Integral bow pulpit with stainless steel chute and roller
- Powder coated aluminum handrails on pilaster
- Powder coated aluminum handrails over side windows

#### Cockpit

- Access hatches to lazarete, gasketed, scuppered, and dogged
- Cable TV and telephone connections
- Cockpit coaming padding
- Cutting board
- Dockside electrical connection, (1) 50 AMP/220V (CableMaster, optional)
- Dockside water connection with pressure reducing valve
- Doors, port and starboard, to conceal shore power inlets, dockside water inlet, faucets and switches
- Engine room access door, with ladder to engine room, lockable
- Fire extinguisher manual controls
- Flybridge ladder with acrylic steps
- Washdown, Freshwater
- Aquamet shafts
- Bronze rudders and struts
- Dripless shaft seals
- Single fuel filter-main engines (2 total)
- Air intake, hull sides
- Emergency engine shut-down system
- Automatic/Manual blower system for engine room
- Bilge pumps (3), auto/manual
- Emergency bilge water evacuation system, engine driven
- Electric Hot Water Heater: 11 gal
- Engine and machinery room lighting AC & DC
- Engine room access ladder (removable)
- Fixed fire extinguishing system for engine and machinery rooms with automatic and remote manual controls plus audible and visual discharge signals
- Generator: 10 kW freshwater-cooled, remote start diesel generator with exhaust muffler and sound shield (Generator may not supply power for all standard, optional and owner-added equipment. Power management may be required.)
- Fuel filters on generator supply
- Hydraulic steering with power assist pump
- Seacocks, heavy duty manganese bronze
- Seawater strainers for generator, air conditioning and saltwater washdown pump
- Under gunwale storage for boat hook and gaff

#### Flybridge

- Stainless steel steering wheel
- AM/FM Stereo, CD player with watertight speakers
- Compass
- Stereo and VHF locker with plexiglass cover
- Distribution panel in locker
- Electronic controls
- Systems monitors with audible alarms included in engine package Instrument panel and planned electronics areas for larger equipment
- Instrument panel with: tach, oil engine pressure, engine water temperature, gear, oil pressure, voltmeter, fuel level, switches and fireboy discharge indicator

- Helm and Companion seat, (pair)
- International navigation lights
- Molded footrest for helm seat
- Seating: U-shaped lounge forward of helm
- Storage: molded under lounge for life raft, console, molded portside storage
- Console handrails, port, starboard and forward
- Air horn
- Bertram dark blue flybridge stripe with gold accent pin-stripe

#### Engine Compartment and Fuel Systems

- Twin diesel turbo-charged, fresh water cooled main engines with marine gear, engine driven alternators, water separators/ fuel filters, & exhaust mufflers
- Acoustical and thermal insulation in the engine room
- Vibration dampening isolators for engines
- Aquamet shafts
- Bronze rudders and struts
- Dripless shaft seals
- Single fuel filter-main engines (2 total)
- Air intake, hull sides
- Emergency engine shut-down system
- Automatic/Manual blower system for engine room
- Bilge pumps (3), auto/manual
- Emergency bilge water evacuation system, engine driven
- Electric Hot Water Heater: 11 gal
- Engine and machinery room lighting AC & DC
- Engine room access ladder (removable)
- Fixed fire extinguishing system for engine and machinery rooms with automatic and remote manual controls plus audible and visual discharge signals
- Generator: 10 kW freshwater-cooled, remote start diesel generator with exhaust muffler and sound shield (Generator may not supply power for all standard, optional and owner-added equipment. Power management may be required.)
- Fuel filters on generator supply
- Hydraulic steering with power assist pump
- Seacocks, heavy duty manganese bronze
- Seawater strainers for generator, air conditioning and saltwater washdown pump

#### Electrical Systems - Deckhouse

- 240V/120V AC input and main distribution panel with voltmeter, ammeter, generator controls, magnetic circuit breakers and shore power selector switches
- 24V DC main distribution panel with voltmeter, ammeter, magnetic circuit breakers and batteries tester
- Alarm Monitor: bilge flood signal for three

- compartments, black water tank indicator light, high-heat signal in engine and machinery rooms
- Electrical pump-out for toilet holding tank
- Fresh water level gauge
- Light fixtures, 120V AC/ 24V DC
- Radio and cable television system with antenna and shore connection
- Telephone jacks with shore connection

#### Electrical Systems - Galley

- 240V/120V AC appliances distribution panel with magnetic circuit breakers
- 24V DC galley and cabins distribution panel
- GFI receptacles

#### Electrical Systems - Bridge

- 24V DC flybridge electronics accessory panel with magnetic circuit breakers in console
- 12V DC flybridge electronics accessory panel with magnetic circuit breakers in console
- Alarm Monitor: bilge flood signal for three compartments, high-heat signal in engine and machinery rooms
- Battery parallel switch, remote
- Main engine control panel
- GFI receptacles

#### Electrical Systems - Engine Room and Systems Room

- 24V DC batteries panel with switches for main engines and main battery disconnect switches
- 24V DC fuses for uninterrupted power to bilge pumps, fire and bilge flood monitors
- Air conditioning zoned with reverse cycle heat
- Batteries (4), heavy duty, 12V DC
- Battery chargers with thermal cutoff and switching system for complete integration and battery parallel system for main engines and generator
- Bonding system, galvanic and electrical
- Converter (1) 50 amp
- GFI receptacles
- Light fixtures, 120V AC/ 24V DC

#### Deckhouse- Salon

- Aluminum salon door with frameless glass
- Fixed frameless windows with tinted safety glass, port and starboard
- Removable frameless window with tinted safety glass, aft
- Sofa
- Barrel chair (not available with optional wet bar)
- Dry bar with bottle storage
- Cherry wood paneling with padded vinyl accents

- Vinyl headliner (Whisper Wall System)
- Wood blinds
- Air conditioning electronic control
- Carpeting with acoustic padding
- Entertainment center with LCD 19" TV AM/FM/CD/DVD/MP3 player
- Electrical distribution panels
- Lighting, 120V AC and 24V DC
- 120V AC receptacles

#### Deckhouse- Galley/Dinette

- Refrigerator 120V AC (4.9 cu ft.)
- Freezer, AC/DC (2.0 cu.ft.)
- Flooring, Amtico teak and holly
- Cooktop, two burner, ceramic
- CORIAN® countertop and sink
- Single lever hot and cold faucet
- Microwave oven
- Dinette, L-shaped with table
- Lighting, 120V AC
- Storage cabinets & drawers
- Vinyl headliner

#### Companionway

- Carpeting
- Flush panel doors to staterooms, starboard head and laundry locker
- Lighting 24V DC
- Awlgrip finished bilge storage compartment
- Vinyl headliner and wallcovering

#### Master Stateroom

- Queen-sized berth with drawer storage beneath
- Mattress, foam with spread, pillows, and shams
- Sheets/pillowcases, one set
- Air conditioning electronic control
- Carpeting
- Entertainment center with 19" LCD TV AM/FM/CD/DVDMP3 Player
- Hanging locker with shelves
- Hullside storage locker
- Vinyl headliner
- Lighting, 120V AC and 24V DC
- 120V AC receptacles
- Reading lights
- Built in digital alarm clock
- Opening hatch with shade

#### Starboard Guest Stateroom

- Berths, twin, side by side with storage beneath
- Mattress (2), foam with spread, pillows, and shams
- Sheets/pillowcases, one set for each berth
- Air conditioning electronic control

- Carpeting
- Hanging locker, cedar lined with automatic light
- Hullside shelves
- Nightstand with drawer
- Opening hatch overhead with shade & screen
- Built in digital alarm clock
- 120V AC receptacles
- Lighting, 120V AC and 24V DC
- Reading lights
- Vinyl headliner and wallcovering
- AM/FM/CD Player

#### Port Guest Stateroom

- Berths, upper & lower, with storage beneath lower berth
- Mattress, foam with spread, pillows, and shams
- Sheets/pillowcases, one set for each berth
- Air conditioning electronic control
- Carpeting
- Vinyl head liner and wallcovering
- Washer/Dryer combo unit in locker
- Built in digital alarm clock
- Lighting, 120V AC and 24V DC
- 120V AC receptacles
- AM/FM/CD Player

#### Master Head

- CORIAN® countertop and sink
- Vanity locker with sliding mirror panels
- Flooring, Amtico teak and holly
- Lighting, 120V AC and 24V DC
- Mirrored overhead
- Stall shower with door
- Tecma® electric toilet system (freshwater)
- Towel bar
- Vinyl wallcovering
- 120V AC GFI receptacles
- Exhaust blowers

#### Starboard Guest Head

- CORIAN® countertop and sink
- Flooring, Amtico teak and holly
- Vanity locker with sliding mirror panels
- Lighting, 120V AC and 24V DC
- Mirrored overhead
- Stall shower with door
- Tecma® electric toilet system (freshwater)
- Towel bar
- Vinyl wallcovering
- Sheets/pillowcases, one set for each berth
- Exhaust blowers

#### Coast Guard Mooring and Docking Equipment

- American flag
- Bertram burgee
- Docking lines braided nylon
- Fire extinguishers, portable
- Fog bell, 8"
- Life jackets (8)
- Life ring
- Owner's manual

#### OPTIONS

##### Cockpit Options

- Cockpit shower, hot and cold
- Cockpit Sole Teak
- Fiberglass swim platform
- Fighting Chair, Teak seat small
- Icemaker, Eskimo, for transom fishbox
- Macerator for cockpit fishbo
- Tackle Drawers
- Baitwell in cockpit locker

##### Flybridge Options

- Helm and Companion teak seat (pair)
- Power Actuated Electronics Console
- Electronic Side mount controls with matching wheel
- Table on flybridge, fiberglass
- Remote control for fly bridge stereo in cockpit

##### Deck/Exterior

- Underwater Lights across Transom, 24V (3)
- Underwater Lights across Transom, 24V (2)
- Mirrored overhead
- Stall shower with door
- Tecma® electric toilet system (freshwater)
- Towel bar
- Vinyl wallcovering
- 120V AC GFI receptacles
- Exhaust blowers

##### Engine Room/System Options

- AlgaeSep Fuel Polisher
- Cable Master, Glendinning
- Generator 15 KW 60 HZ in lieu of STD
- International Package
- Oil Change System
- Trolling Valves
- ARG - Anti Roll Gyro System, (1) ARG 2000

##### Interior

- Central Vacuum System
- Flooring: Upgrade carpet
- Forward Windows
- Lower Control Station (Forward Windows required)
- Sheet Set, additional, one set for each bed

- Sofa: Convertible Sofa
- Throw pillow package
- Wet bar (Salon)

##### Audio/Visual

- Port Guest Stateroom 19" LCD TV, AM/FM, CD/DVD/MP3 Player
- Starboard Guest Stateroom 19" LCD TV, AM/FM, CD/DVD/MP3 Player

##### Cruising Package (Includes Options Below)

- Radar Arch
- Bimini top with boot
- 3-sided weather enclosure
- Basic Electronics
- Cockpit Freezer
- Baitwell
- Cablemaster
- Oil Change System
- Cockpit Shower

##### Hard Top Package (Includes Options Below)

- Hi-Spec Top
- 3-sided weather enclosure
- Basic Electronics
- Cockpit Freezer
- Baitwell
- Cablemaster
- Oil Change System
- Cockpit Shower