

V I K I N G Y A C H T S



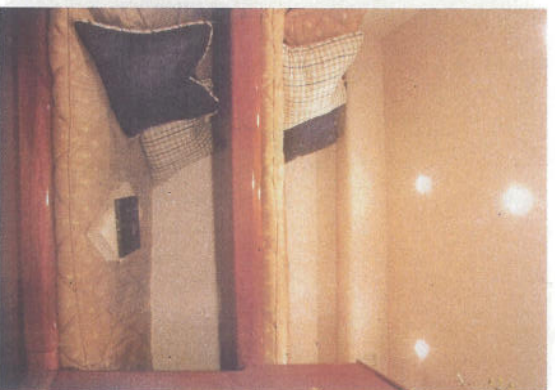
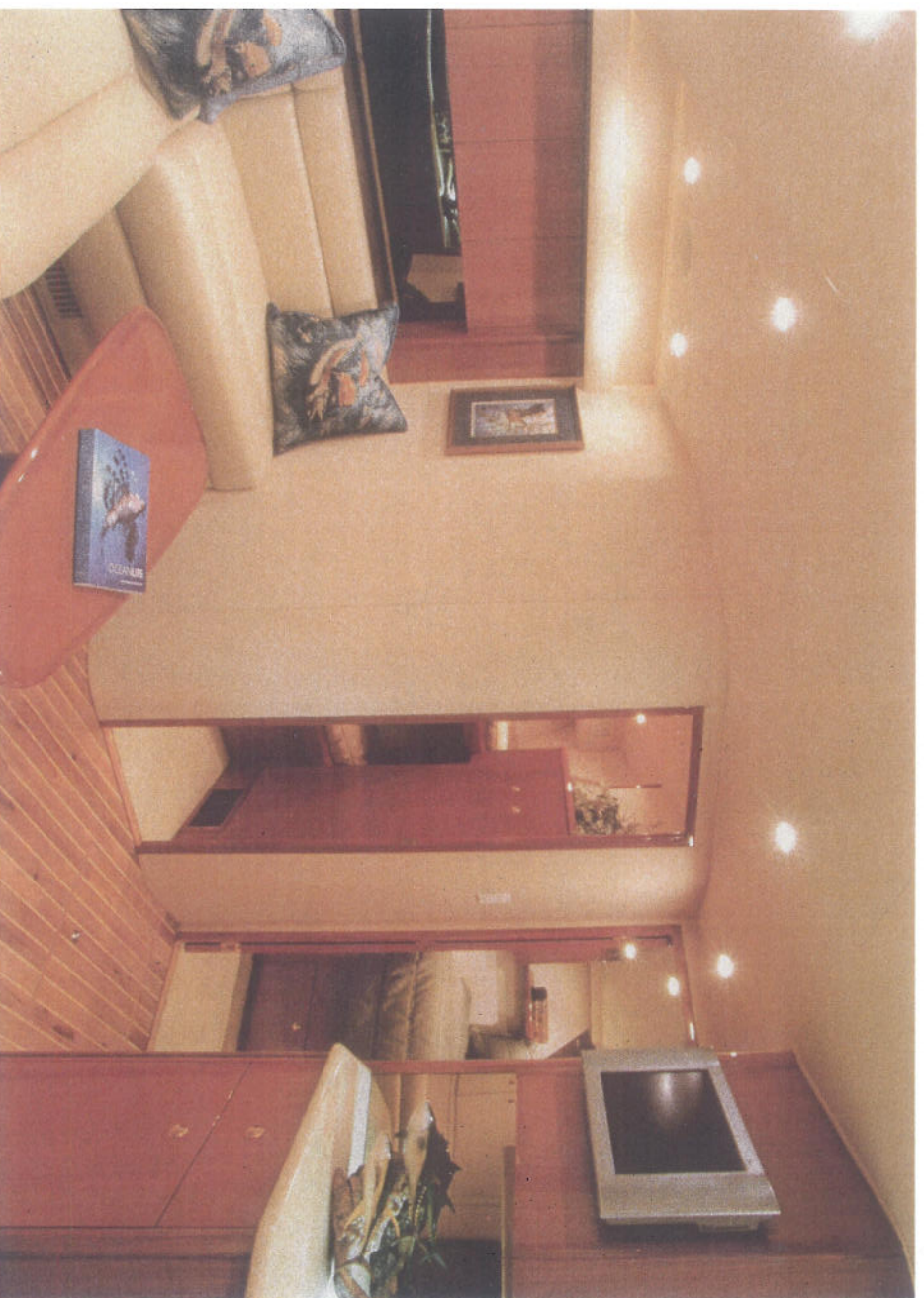
4 5 O P E N

Comfort with room to spare

The 45 Open has been bred to deliver stellar performance with luxuriant accommodations to match. Airy and inviting, the tasteful salon offers a well earned respite after a long day on the water chasing trophies with its beautiful teak joinery, solid surface countertops in the galley and head, a plush lounge, full featured galley and entertainment system. Maximum privacy and comfort are assured with a choice of a single or two-stateroom layout. Both versions include a queen-size berth forward, while the alternate plan supplies the versatility of upper and lower berths in the port cabin.

The bridge deck features three adjustable helm seats and an L-shaped lounge to port with rod stowage below. To starboard, a molded fiberglass console houses a refrigerator and icemaker, stowage locker and jump seat.

The visibility from the centerline helm is outstanding and high-speed stainless-steel rudders matched to power-assisted hydraulic steering provide fingertip control.

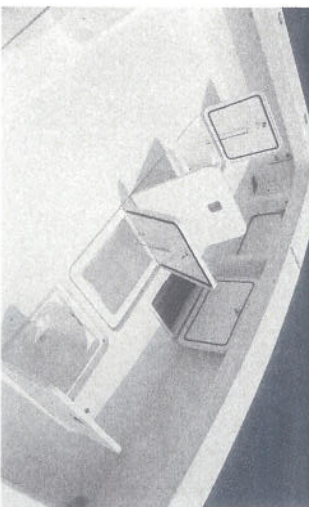


Spectacular performance and quality

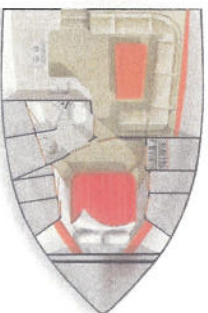
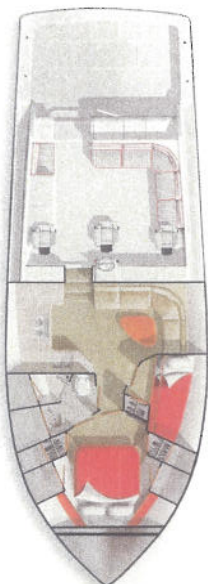
The 119 square-foot cockpit includes a molded nonslip sole with an insulated fishwell and drink box. A molded console holds a bait freezer, a rigging station, tackle stowage and provides engineroom access.

Engineered like its larger siblings, powder-coated web frame steel engine beds are hung on dedicated composite bulkheads to minimize vibration and assure drive train alignment. The raked entry, molded chines, 15-degree transom deadrise and fairbody running surface allows the 45 Open to plane quickly and efficiently and a solid keel enhances tracking in a seaway.

Options, including a variety of diesel power, a tuna tower, outriggers and a fiberglass swim platform, allow infinite customization possibilities.

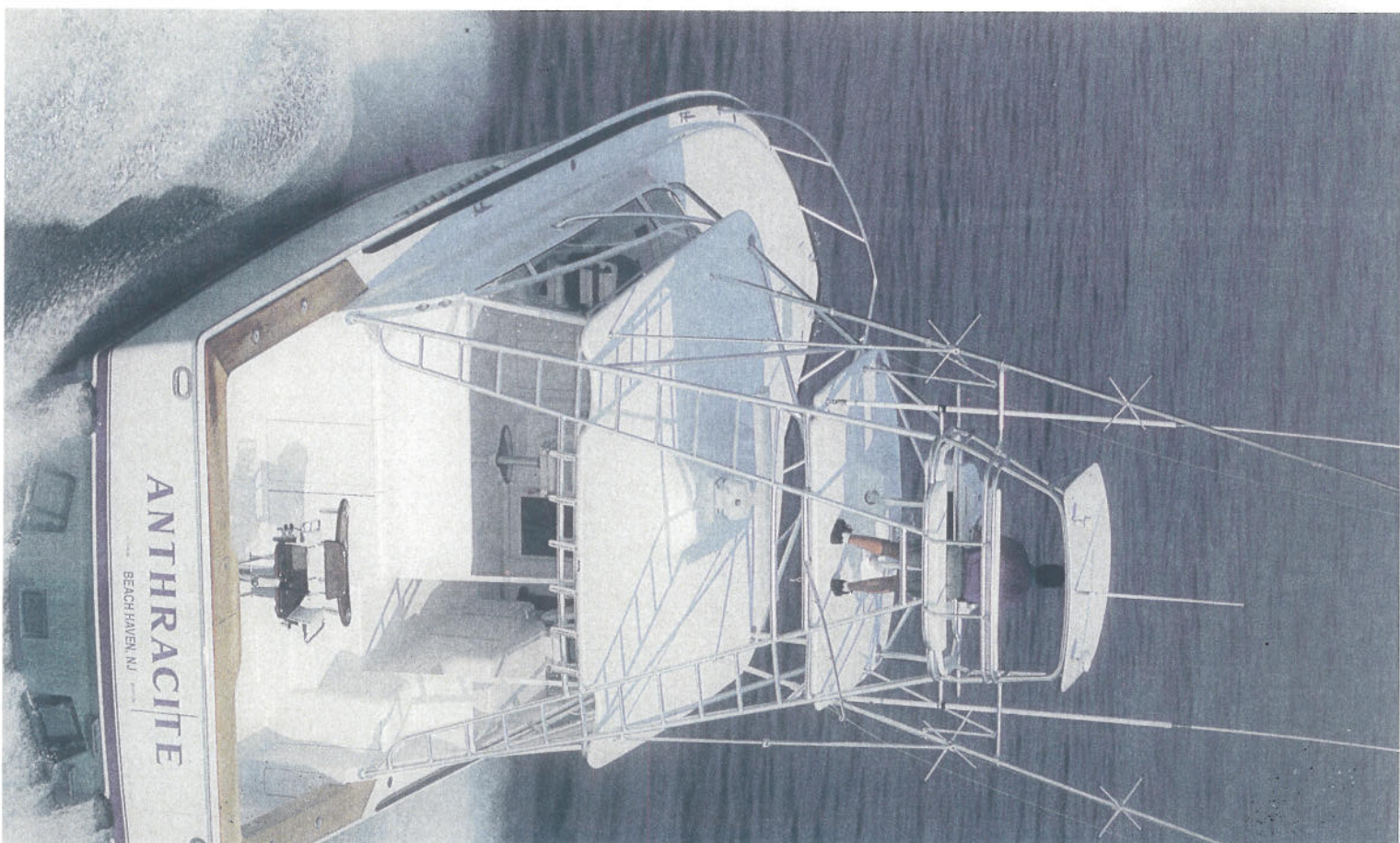


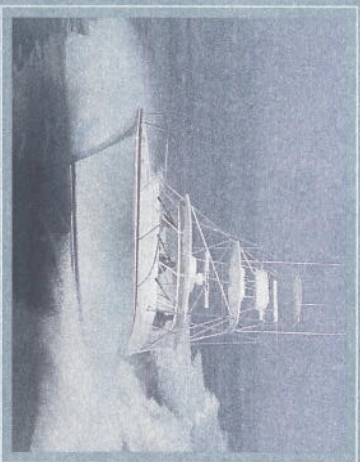
Navigation and fishing electronics nestle safe, secure and always readable behind clear panels, which gives the helm a clean, customized look. In the cockpit, fishing amenities abound and the transom door serves anglers and divers alike.



45 Open Specifications

Length, Overall (L.O.A.)	45 ft. 10 in.	(13.97 m)
Beam	16 ft. 4 in.	(5.0 m)
Draft	4 ft. 6 in.	(1.37 m)
Displ. (wet)*	48,048 lbs.	(21,812 k)
Fuel	848 gals.	(3,210 l)
Water	150 gals.	(568 l)





We cordially invite you to contact your Viking Yacht dealer to arrange a sea trial
and a visit to our 550,000 square-foot modern facility on the beautiful Bass River near Atlantic City, NJ.



For those who demand the best.

Route 9, On the Bass River, New Gretna, New Jersey 08224 U.S.A. • Tel (609) 296-6000 • Fax (609) 296-3956 • www.vikingyachts.com
For full details and the name of the Viking dealer nearest you, contact Viking Yacht Company.

The right is reserved to make changes, without notice, at any time, in equipment, materials, prices and specifications. Accommodation drawings and photos may show some optional equipment.